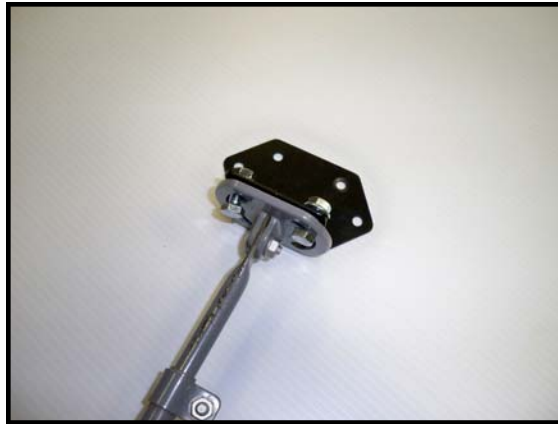


Strut Clip L - Type Model 0770



Installation Instructions



1) Connect Clip to monopole foot with 5/16" bolts and flange nuts. (Leave the bolt and nut assembly loose)



2) With the monopole loosely attached to the mast pipe, locate a position on the roof for the clip. Carefully lift the shingle in this location and slide the base of the clip beneath the shingle.



3) Fasten the base of the clip to the roof deck with two of the Trusshead screws.



4) After fastening the clip to the roof deck, finish tightening the 5/16" bolts connecting the clip to the monopole.



5) Complete the installation by tightening all of the nut and bolt fittings on the monopole from the base to the mast pipe, in that order.